



Funded by the European Union



EUROMED Migration IV

19/09/2015 Info sheet

Background

The overall objective of the EUROMED Migration IV is to implement a comprehensive and shared approach to strengthen effective dialogue and cooperation on migration, mobility and international protection issues between the European Neighborhood Instrument (ENI) South Partner Countries (SPC) and EU Member States (EU MS), as well as among ENI SPCs themselves. The project will support EU Member States and ENI SPC in enhancing a comprehensive, constructive and operational dialogue and cooperation framework, with particular focus on reinforcing instruments and capacities to develop and implement evidence-based and coherent migration and international protection policies.

Building on previous phases, the EUROMED Migration IV is shaped by the European Agenda on Migration,¹ as well as the Global Approach to Migration and Mobility (GAMM)² and the Communication on Migration and Development,³ which are closely aligned with the EU's foreign and development policies. The project will be thematically articulated around the four pillars to manage migration better laid out by the European Agenda on Migration i.e.

- Reducing the incentives for irregular migration;
- Border management – saving lives and securing external borders;
- Europe's duty to protect: a strong common asylum policy; and
- A new policy on legal migration.

Furthermore, the project is part of the support efforts of the EU to fully exploit the interrelationship between migration, mobility and employment as defined in the Agenda for Change.⁴

The EUROMED Migration IV project is funded by the EU, through the Directorate General European Neighbourhood Policy and Enlargement Negotiations (NEAR), with a budget of € 7,070,000 and will be implemented by the International Centre for Migration Policy Development (ICMPD) over a period of 44 months.

¹ Communication from the Commission to the European Parliament, the Council, the European Economic and Social Committee and the Committee of the regions – A European Agenda on Migration, COM(2015) 240 final, Brussels, 13.5.2015, available at: http://ec.europa.eu/dgs/home-affairs/what-we-do/policies/european-agenda-migration/background-information/docs/communication_on_the_european_agenda_on_migration_en.pdf

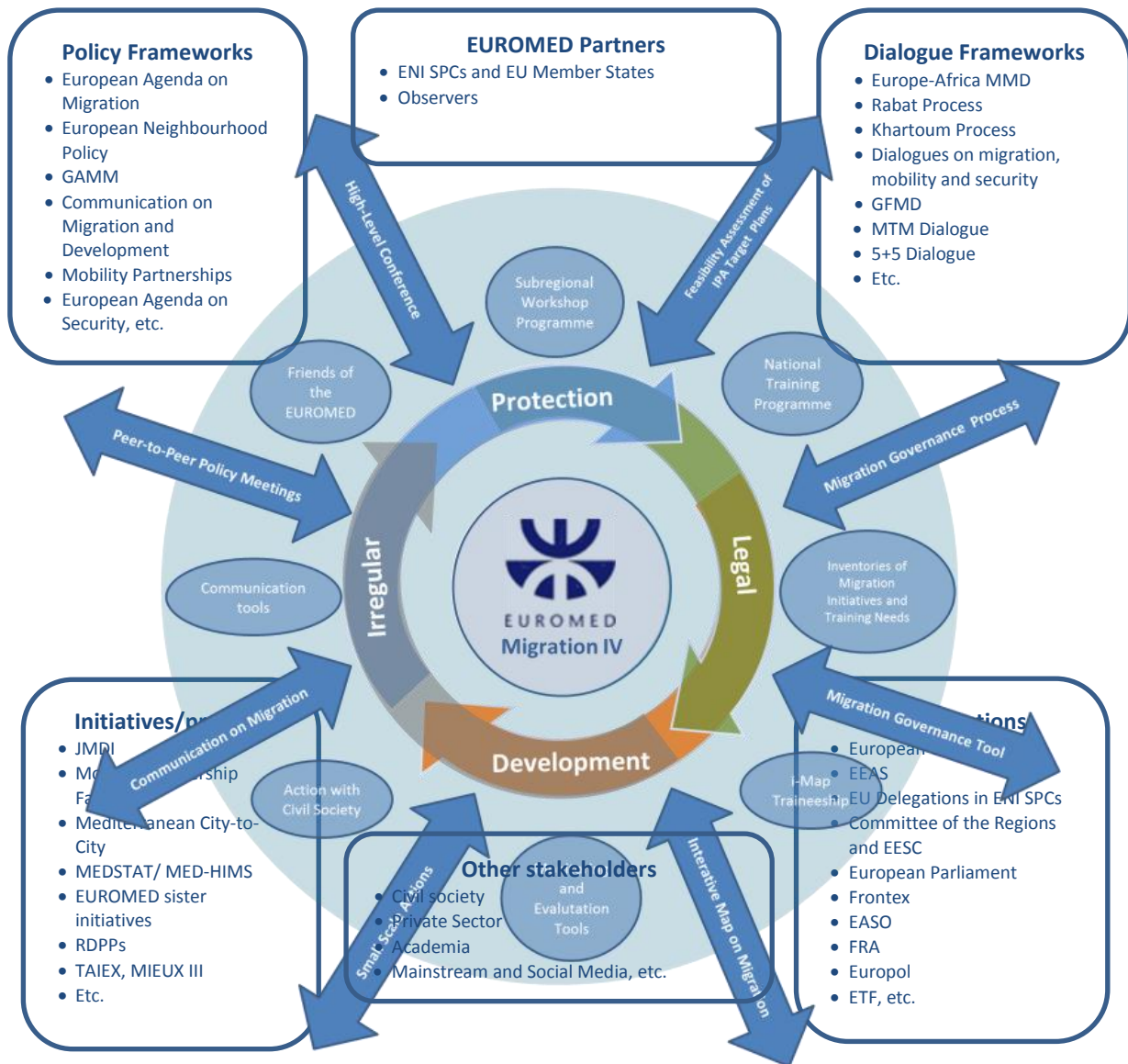
² The GAMM, initially launched in 2005, was renewed in 2011: The Global Approach to Migration and Mobility, COM(2011) 743 final, Brussels, 18.11.2011, available at: <http://eur-lex.europa.eu/legal-content/EN/TXT/PDF/?uri=CELEX:52011DC0743&from=EN>

³ Communication from the Commission to the European Parliament, the Council, the European Economic and Social Committee and the Committee of the regions - Maximising the Development Impact of Migration, the EU contribution for the UN High-level Dialogue and next steps towards broadening the development-migration nexus, COM(2013) 292 final, Brussels, 21.5.2013, available at: https://ec.europa.eu/europeaid/sites/devco/files/communication-maximising-the-development-impact-of-migration_en_11.pdf

⁴ « Increasing the impact of EU Development Policy : an Agenda for Change », COM(2011) 637 final, Brussels, 13.10.2011, available at: <http://eur-lex.europa.eu/legal-content/EN/TXT/PDF/?uri=CELEX%3A52011DC0637&qid=1412922281378&from=EN>

Architecture

The project will be articulated in two dimensions, supported by a horizontal component. These dimensions are inter-connected and touch upon every elements of the project. In turn while some foreseen actions are purely focusing on the project, others will play a key role in bridging the work of the EUROMED Migration IV with the main policy frameworks, dialogues, initiatives and projects, as well as stakeholders of relevance. The overall architecture is foreseen as indicated below:

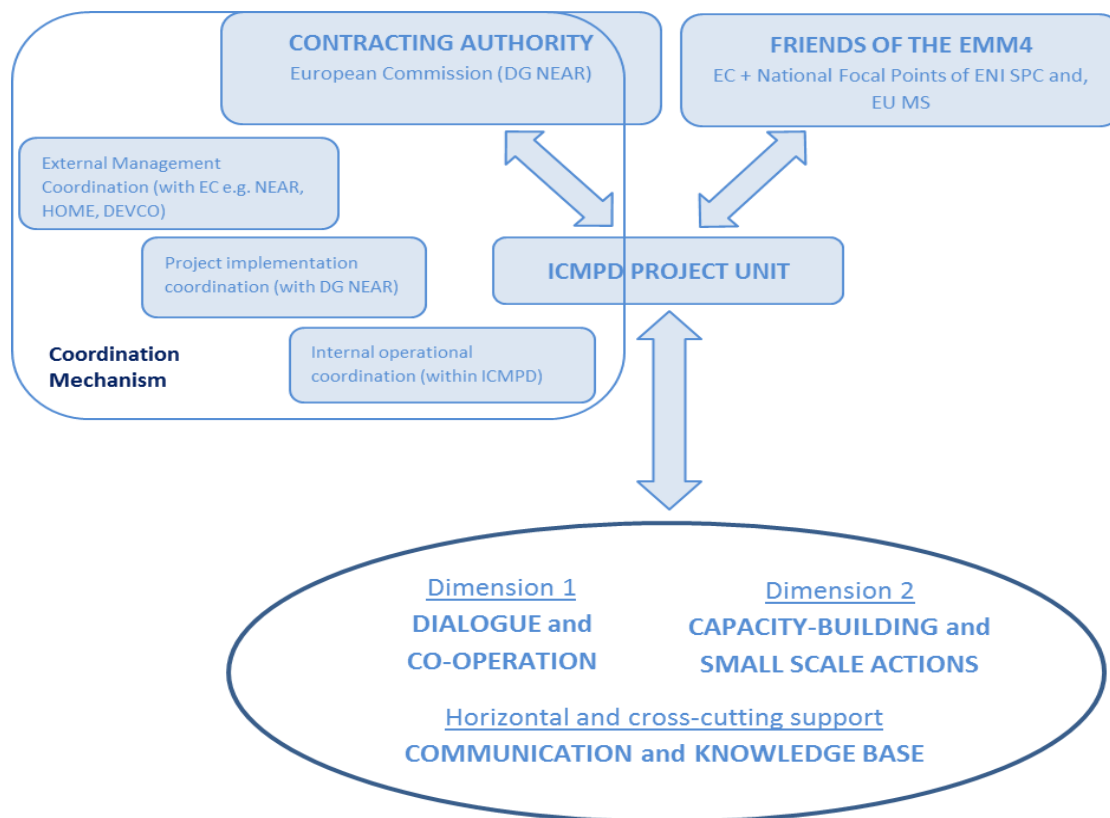


- 1) **Regional Dialogue and Co-operation:** facilitation of an effective **North-South and South-South regional dialogue and co-operation** in the main fields of migration and international protection-related matters (migration governance, legal migration, irregular migration, migration and development and international protection and asylum).
- 2) **Capacity-building and Small Scale Actions:** through an innovative approach which is to ensure greater efficiency and a broad and lasting impact. It will continue efforts undertaken in the field of migration governance through the Migration Profile Process (MPP) which is meant to evolve into the national **Migration Governance Process (MGP)**, and also include the possibility to conduct sub-regional activities, implement tailor-made national training programmes and build-up a targeted **technical assistance package** including funding of **small-scale actions** for committed partners.

Horizontal and cross-cutting activities will support both dimensions, with particular focus on knowledge-based and communication, especially in the perspective of contributing to more dissemination of balanced information for a balanced narrative on migration. This component will notably include the **interactive Map on Migration (i-Map)** and its **Traineeship Programme** open to students and young professional of the region.

Inclusive governance to encourage participation and multi-level ownership

The governance structure of the EUROMED Migration IV project aims to provide an inclusive, multi-layered and structured space for decision-making. This structured is illustrated in the diagram below.



Governance:

The Project Unit of the EUROMED Migration IV is managed by ICMPD. Its tasks are to implement the project to facilitate dialogue and cooperation between ENI SPC and EU MS, as well as between ENI SPC themselves (Dimension 1); to support capacity-building and small scale actions in ENI SPC (Dimension 2); and to ensure a knowledge-based support to the EUROMED Migration framework and through communication actions help promote a balanced narrative on and better image of migration (Dimension 3). **The Contracting Authority** is the European Commission (DG NEAR).

The steering is supported by a **coordination mechanism** composed of a) internal operational coordination (within ICMPD); b) project implementation coordination (between DG NEAR and ICMPD); and c) external management coordination (with relevant EC DGs e.g. NEAR, HOME and DEVCO), as well as the **Friends of the EUROMED** composed of the EC, ICMPD, ENI SPC and EU MS. The aim of this steering structure is to facilitate regular consultations with the project stakeholders, provide guidance, monitor and evaluate the implementation, and ensure coordination and maximization of synergies.